



PREMIUM AFTERMARKET WIND DEFLECTORS

Volkswagen New Beetle 2003-2012 wind deflector fitting instructions

Product No: 38.12.01.01

Product No: 38.12.01.03



Product No: 38.12.01.04



What is in the box

1 x Wind deflector

1 x Installation manual



PREMIUM AFTERMARKET WIND DEFLECTORS

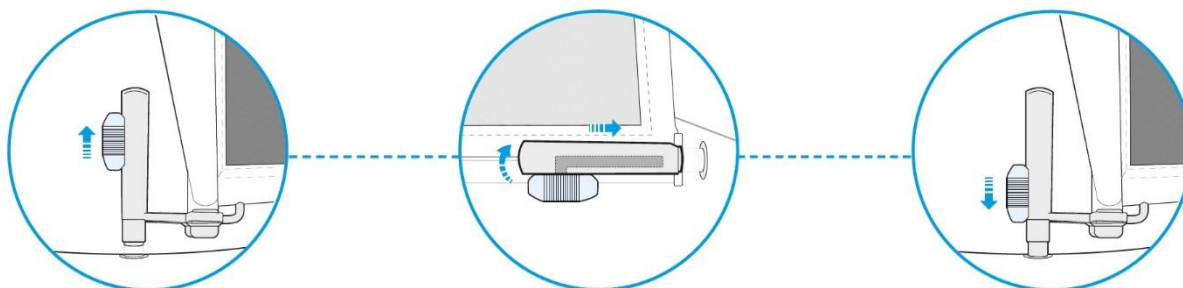
STEP 1

Open the top, fold both front seats forward then slide the wind deflector bracket in the gap of the rear seat.



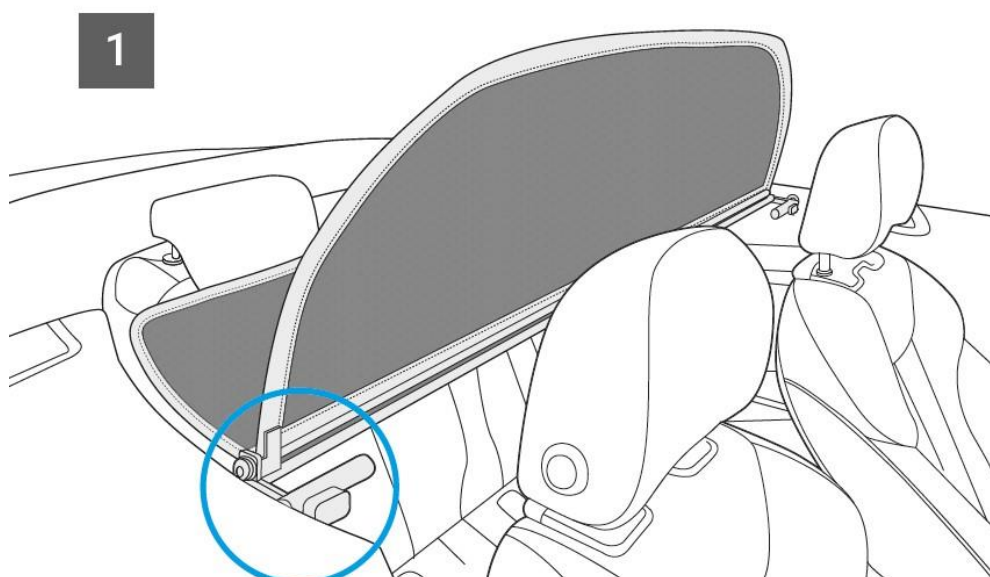
STEP 2

Unlock the wind deflector pins and push them the factory fitted wind deflector slots.





PREMIUM AFTERMARKET WIND DEFLECTORS



STEP 4

Go out for a test drive and enjoy you APERTA wind deflector!

